



# Mercury Series

High stability and reliability transparent LED screen

## Product Introduction



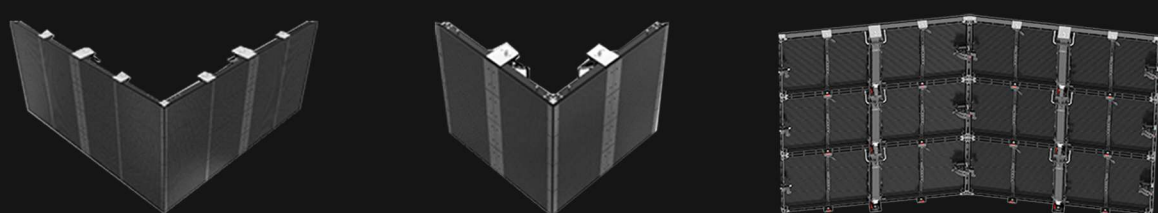
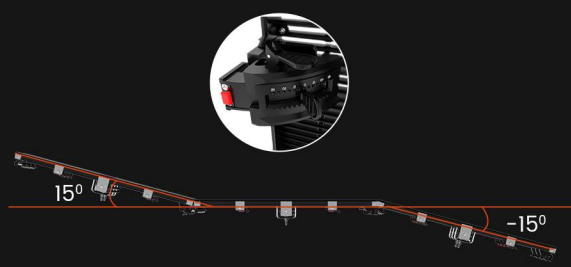
1. Cabinet Handle
2. Locating Pin
3. Vertical Lock
4. PSU Box
5. Power Cord Plug
6. Signal Plug
7. Handle
8. Curve Lock
9. Vertical Lock

**Mercury** is a transparent LED product that is easy to install and maintenance. In order to meet the needs of the rental market for lightweight and stable operations, Mercury is made of die casting materials, and adapts IP65 waterproof design. Supporting curved splicing, from -15 degrees to +15 degrees. Transparent screen grid window ventilation module enables small wind resistance with higher safety.

## Features

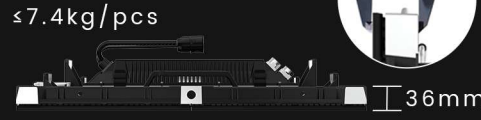
### 1. Versatile Splicing Installation

Supporting 90° splicing installation as well as curved splicing. Mercury enables seamless integration of various cabinet sizes, facilitating the creation of innovative and visually appealing designs.



### 2. Lightweight Design

The Mercury panels boast a lightweight design that not only facilitates easy handling and mounting but also minimizes the required transport volume.



### 3. Platform Design

Adhere to the Venus Series, different pixel modules can be used on one cabinet frame, save money on product, accessories and training.



### 4. High Transparent LED Panel

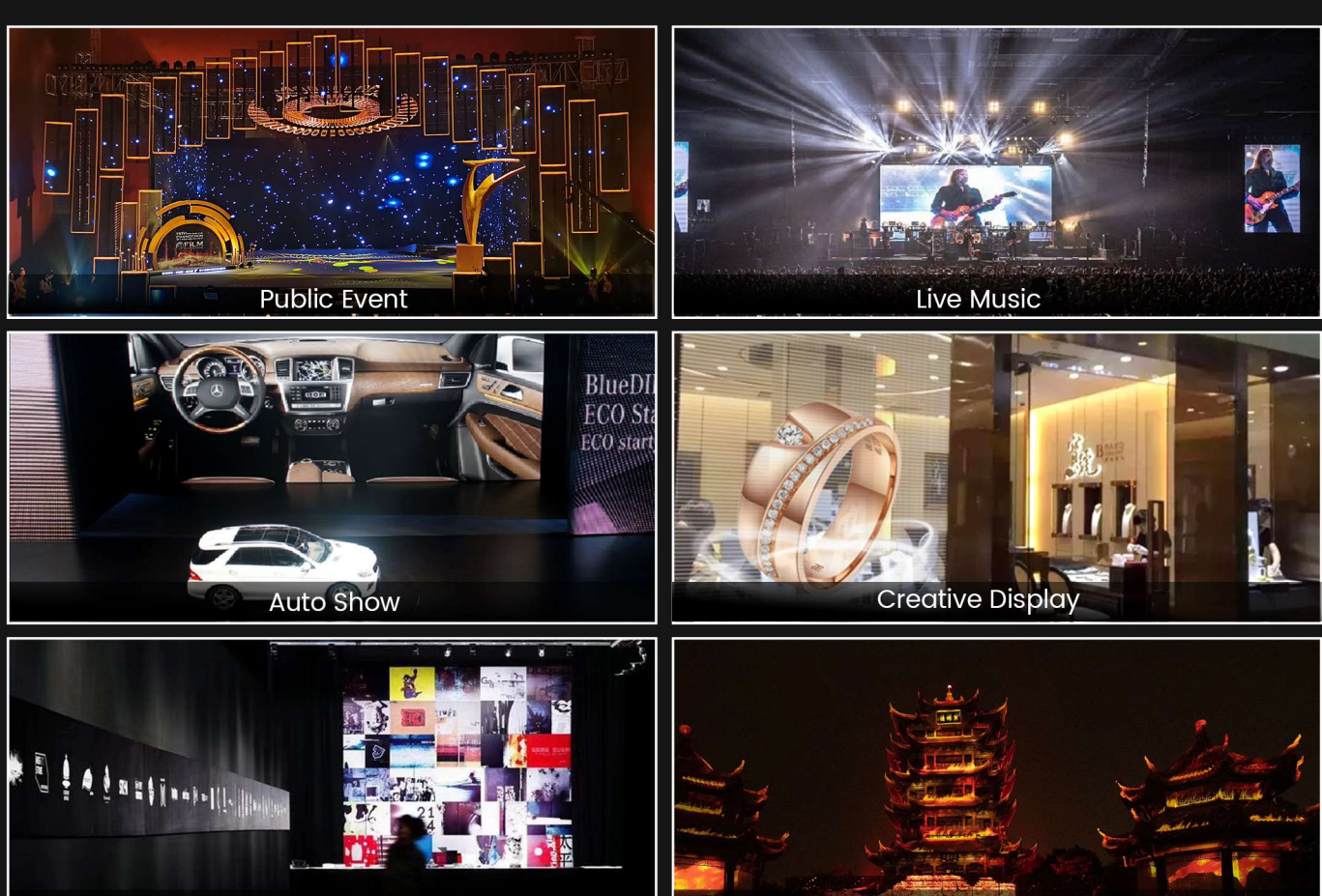
With a high transparency from 53% to 71%, the Mercury is the ideal solution for a range of creative applications for events and concerts.

### 5. Stable and Reliable

Adopting an exclusive circuit protection design and a specialized waterproof production process, ensuring stable and reliable product performance.



## Applications



## Specifications

### Mercury series

|         | LED Type | Pixel Pitch | Max. Brightness | Cabinet Material | Cabinet Dimensions (LxWxD) | Cabinet Resolution (HxV) | Weight Per Cabinet | Gray Scale | Refresh Rate | Permeation Ratio | IP Rating (Front/Rear) | Driver IC |            |
|---------|----------|-------------|-----------------|------------------|----------------------------|--------------------------|--------------------|------------|--------------|------------------|------------------------|-----------|------------|
| Outdoor | MY-370   | SMD 1921    | P3.9-7.8        | 4800             | Die Casting Aluminum       | 1000*500*90              | 256*128            | 7.4kg      | 14bit        | 3840Hz           | 55%                    | IP65      | ICN2153    |
|         | MY-510   | SMD 1921    | P5.2-10.4       | 4800             |                            | 1000*500*90              | 192*96             | 7.4kg      | 14bit        | 3840Hz           | 58%                    | IP65      | MY9866     |
|         | MY-100   | SMD 2727    | P10.4           | 3200             |                            | 1000*500*90              | 96*96              | 7.4kg      | 14bit        | 3840Hz           | 58%                    | IP65      | MY9866     |
| Indoor  | MY-251   | SMD 1415    | P2.6-5.2        | 4800             | Die Casting Aluminum       | 1000*500*90              | 384*96             | 4.2kg      | 15bit        | 4600-7000Hz      | 52%                    | None      | ICN2153PWM |
|         | MY-371-B | SMD 2020    | P3.9-7.8        | 1200             |                            | 1000*500*90              | 256*128            | 4.2kg      | 14bit        | 3840Hz           | 55%                    | IP30      | ICN2153    |
|         | MY-511-B | SMD 2020    | P5.2-10.4       | 1200             |                            | 1000*500*90              | 192*96             | 4.2kg      | 14bit        | 3840Hz           | 57%                    | IP30      | MY9866     |

